



GROVEFIELD MANOR

Flexible Accommodation minutes from the Sea

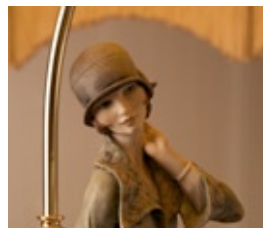
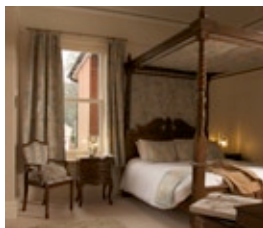


Self Catering Apartment | Elegant En-Suite Bedrooms | Meeting Centre



For people who wish an experience of 'Old England' coupled with the comforts and expectations of the 21st century, where personal service is important, Grovefield Manor is the ideal location for your stay or your function.

Places of interest easily accessible include the historic town and harbour of Poole, the shopping and entertainment of Bournemouth and walks in the New Forest or coastal paths of the Purbecks.



The ground floor cottages are ideal for holidays or corporate letting. Each has 2 bedrooms and a small private garden with barbecue. (sorry no pets) Both the cottages and the apartment in the main house have a dishwasher, washing machine, oven, microwave and fridge. Guests are welcome to use the lounge where Sky Sports is available and to take breakfast in the dining room if they wish.

Dating back to 1895 Grovefield Manor has been providing accommodation to guests for over 60 years and is opposite the access to one of the most beautiful sandy beaches on the south coast. Recent extensive refurbishment has transformed the manor house into exclusive, bijoux accommodation.



Situated at the entrance to Branksome Dene Chine

3 minutes walk to the best sandy beach on the south coast

9 elegant, individually designed en-suite bedrooms

Self catering accommodation

Function room for small weddings, training events and seminars

Residential/non residential corporate events and other exclusive bookings arranged

WiFi availability

Ample, free car parking

Regular buses to Poole and Bournemouth



GROVEFIELD MANOR

18 Pinewood Road, Branksome Park, Poole BH13 6JS.

01202 766798 info@grovefieldmanor.co.uk